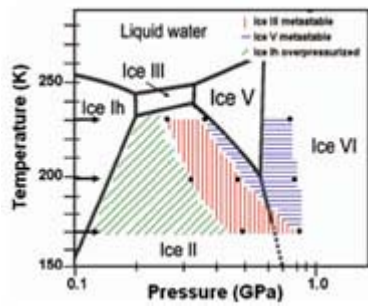


Research Highlights



Hexagonal ice transforms at high pressures and compression rates directly into “doubly metastable” ice phases

Marion Bauer, Katrin Winkel, Daniel M. Toebbens, Erwin Mayer, and Thomas Loerting

Compression and decompression experiments of hexagonal ice in a piston cylinder setup in the temperature range of 170–220 K up to pressures of 1.6 GPa are reported. The main focus is on establishing the effect that an increase in compression rate up to

4000 MPa/min has on the phase changes incurred at high pressures.

[J. Chem. Phys. 131, 224514 \(2009\)](#)